

Repair Parts for Bulletin 1494V Disconnect Switches 30 through 200 Amp Devices

Repair Parts for 1494V-DS30 and 1494V-DS60 Series 'A' Disconnect Switches (See Page 2 of this document for illustration and corresponding item numbers)

Lug kits contain three lugs.

		Catalog Number 1494V-DS30	Catalog Number 1494V-DS60
Description of Part	Item	Repair Part No.	Repair Part No.
Drive Mechanism	2	40394-303-55	40394-303-55
Line Terminal Guard	8	40395-016-01	40395-016-01
Drive Mechanism Screw	9	28158-140-33	28158-140-33
Line/Load Lug Kit ¹	10	X-225492 ²	1494R-N1
Lug Bolt	11	Not Applicable	M-6289
Left Fuse Barrier w/Label	12	40395-301-51	40395-301-52
Right Fuse Barrier w/Label	13	40395-301-53	40395-301-53
Line Terminal Guard Screw	15	28157-053-25	28157-053-25
Mounting Screw (4 req'd)		28158-113-33	28158-113-33

¹ 30 Amp devices use a terminal clamp screw connector. 60 Amp devices do not include lugs as standard.

² Part number contains one lug. 30 Amp devices include terminal clamp screw connectors, no lugs are used.

Repair Parts for 1494V-DS100 Series 'A' and 'B' Disconnect Switches

Lug kits contain three lugs.

		Catalog Number 1494V-DS100 Series 'A'	Catalog Number 1494V-DS100 Series 'B'
Description of Part	Item	Repair Part No.	Repair Part No.
Drive Mechanism	2	40394-321-55	40394-303-55
Line Terminal Guard	8	40397-005-01	40395-016-01
Drive Mechanism Screw	9	28158-141-26	28158-140-33
Line/Load Lug Kit ¹	10	1494R-N2	1494R-N2
Lug Bolt	11	M-6532	M-6532
Left Fuse Barrier w/Label	12	40397-013-01 ²	40397-800-01 ³
Right Fuse Barrier w/Label	13	40397-013-01 ²	40397-800-01 ³
Line Terminal Guard Screw	15	28157-053-25	28157-053-25
Mounting Screw (4 req'd)		28158-502-26	28158-113-33

¹ Optional. Does not come as standard on the device.

² Does not contain the label. Label is not available.

³ Contains both left and right hand barriers.

Repair Parts for 1494V-DS200 Series 'A' and 'B' Disconnect Switches

Lug kits contain three lugs.

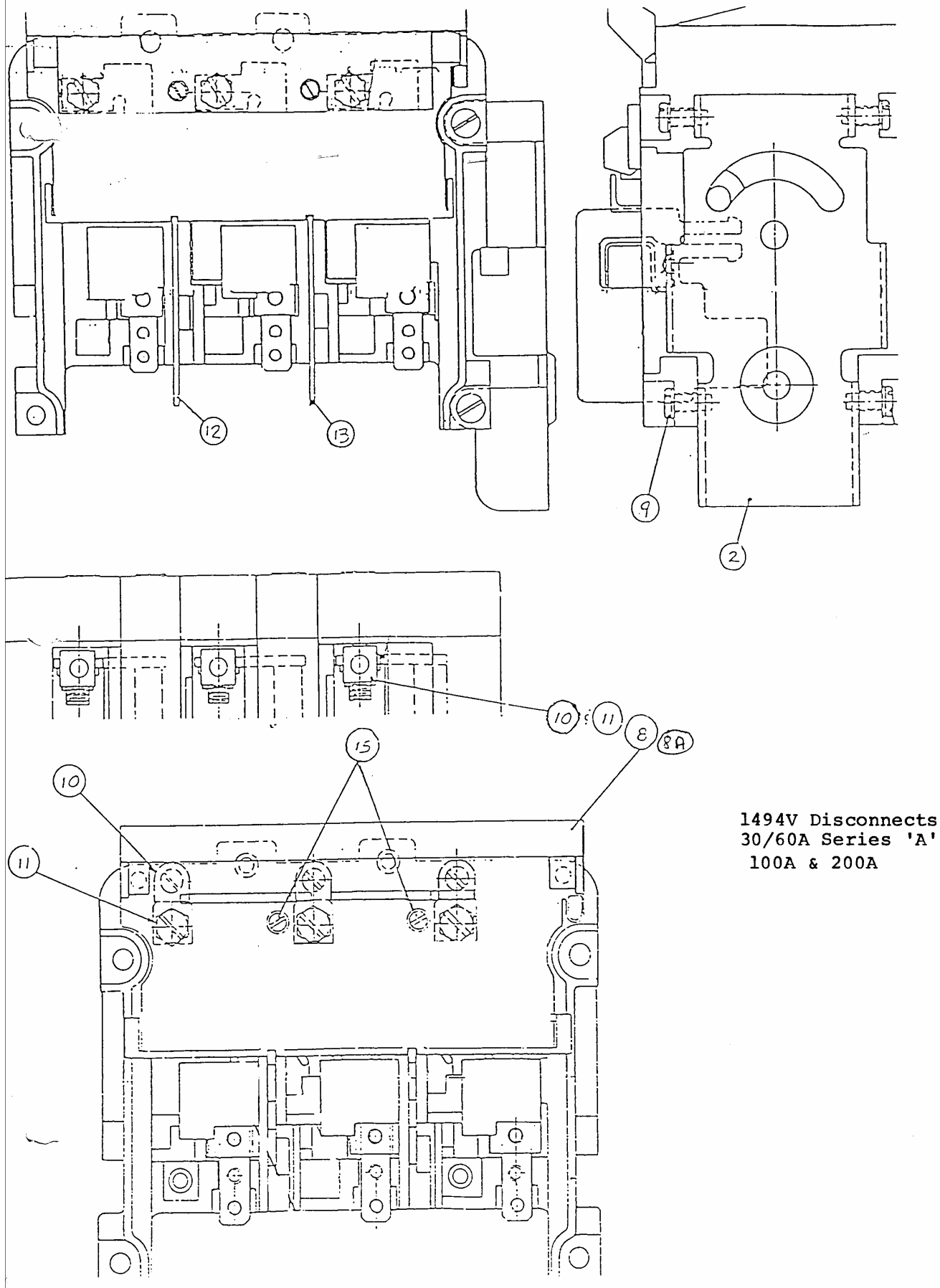
		Catalog Number 1494V-DS200 Series 'A'	Catalog Number 1494V-DS200 Series 'B'
Description of Part	Item	Repair Part No.	Repair Part No.
Drive Mechanism	2	40398-304-53	40394-321-55
Line Terminal Guard	8	40398-310-51 ¹	40397-005-01
Line Terminal Guard O-Ring	8A	F-14731	Not Used
Drive Mechanism Screw	9	M-6629	28158-141-26
Line/Load Lug Kit ²	10	1494R-N3	1494R-N3
Lug Bolt	11	M-6834	M-6834
Left Fuse Barrier w/Label	12	40398-309-51	40398-801-01
Right Fuse Barrier w/Label	13	40398-309-51	40398-801-01
Line Terminal Guard Screw	15	28157-053-25	28157-053-25
Mounting Screw (4 req'd)		M-6629	28158-502-26

¹ Includes line terminal guard, terminal support, mounting screws and o-ring.

² Optional. Does not come as standard on the device.

Repair Parts for Bulletin 1494V Disconnect Switches 30 through 200 Amp Devices

Illustration of Bulletin 1494V 30, 60, 100, 200 amp Switches



Important User Information

Because of the variety of uses for the products described in this publication, those responsible for the application and use of this control equipment must satisfy themselves that all necessary steps have been taken to assure that each application and use meets all performance and safety requirements, including any applicable laws, regulations, codes and standards.

The illustrations, charts, sample programs and layout examples shown in this guide are intended solely for purposes of example. Since there are many variables and requirements associated with any particular installation, Rockwell Automation does not assume responsibility or liability (to include intellectual property liability) for actual use based upon the examples shown in this publication.

Allen-Bradley publication SGI-1.1, *Safety Guidelines for the Application, Installation and Maintenance of Solid-State Control* (available from your local Allen-Bradley office), describes some important differences between solid-state equipment and electromechanical devices that should be taken into consideration when applying products such as those described in this publication.

Reproduction of the contents of this copyrighted publication, in whole or part, without written permission of Rockwell Automation, is prohibited.

Throughout this document we use notes to make you aware of safety considerations:

ATTENTION

Identifies information about practices or circumstances that can lead to personal injury or death, property damage or economic loss



IMPORTANT

Identifies information that is critical for successful application and understanding of the product.

Use only replacement parts and devices recommended by Rockwell Automation to maintain the integrity of the equipment. It is the user's responsibility to ensure that the renewal part number selected is properly matched to the model, series and revision level of the equipment being serviced.

ATTENTION

Servicing energized Industrial Control Equipment can be hazardous. Severe injury or death can result from electrical shock, burn, or unintended actuation of controlled equipment. Recommended practice is to disconnect and lockout control equipment from power sources, and release stored energy, if present.



Refer to **National Fire Protection Association Standard No. NFPA70E, Part 2 and (as applicable) OSHA rules for Control of Hazardous Energy Sources (Lockout/Tagout) and OSHA Electrical Safety Related Work Practices** for safety related work practices, including procedural requirements for lockout/tagout, and appropriate work practices, personnel qualifications and training requirements where it is not feasible to de-energize and lockout or tagout electric circuits and equipment before working on or near exposed circuit parts.

ROCKWELL DISCLAIMS ALL WARRANTIES WHETHER EXPRESSED OR IMPLIED IN RESPECT TO THE INFORMATION (INCLUDING SOFTWARE) PROVIDED HEREBY, INCLUDING THE IMPLIED WARRANTIES OF FITNESS FOR A PARTICULAR PURPOSE, MERCHANTABILITY, AND NON-INFRINGEMENT. Note that certain jurisdictions do not countenance the exclusion of implied warranties; thus, this disclaimer may not apply to you.